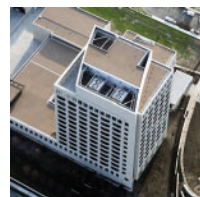
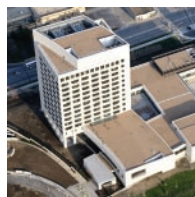


# Federal Reserve Bank Kansas City, Missouri



The new Federal Reserve Bank of Kansas City is a 600,000 square foot facility that resides on an exceptionally prominent hillside just south of the city's landmark Liberty Memorial.



The Federal Reserve Bank is housed in a limestone-clad tower comprised of 12 office floors above a 2-story base containing its operations facilities.

Ellerbe Becket Architects of Kansas City were the design architects. The GAF roof system installed by Delta Innovative Services consisted of a custom color granule surfaced modified bitumen roof system over an insulating lightweight deck. The general contractor was J. E. Dunn Construction.



# DELTA INNOVATIVE SERVICES

508 S. 14th Street, Kansas City, KS 66105 tel: 913-371-7100

internet: [www.deltaservices.com](http://www.deltaservices.com)